



Catalog No.: G02

Product Name:

AccuPrestained Protein Ladder II

Size: 100apps (2x250µl)

Description: The **AccuPrestained Protein Ladder II** contains 10 prestained proteins, covering a wide range of molecular weights from 8.5 to 180kDa. It is designed for monitoring protein separated during polyacrylamide gel electrophoresis, verification of Western transfer efficiency on membranes and for sizing of proteins. The ladder is supplied in protein gel loading buffer and is ready-to-use. No need to heat, dilute, or add reducing agent before loading.

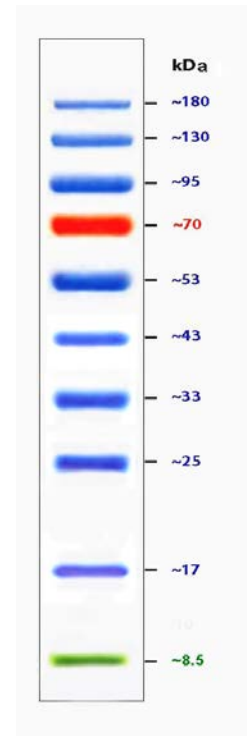
Contents: About 0.1~0.4 mg/ml of each protein in 20 mM Trisphosphate (pH 7.5 at 25°C), 2% SDS, 1 mM reducing reagent, 3.6 M Urea, and stabilizer.

Usage: For each application, about 5µl is needed, depending on the size of the wells.

Quality Control:

Tested on polyacrylamide gel electrophoresis and Western Blotting.

Storage: Store at -20°C.



Note: The apparent molecular weight of each protein (kDa) has been estimated by calibration against an unstained protein ladder on polyacrylamide gel.

For laboratory research use only!

Related Products	Cat. No.
• ECL Western Detection Kit	G075
• Western Protein Maker	WM1000
• Prestained Protein Ladder	GOPL4